



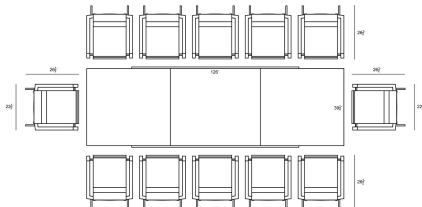
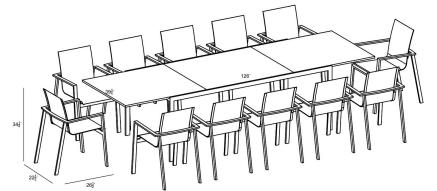
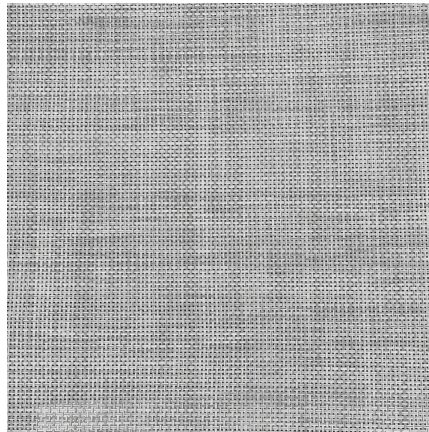
# HARMONIA LIVING

Lift 13 Piece Extendable Dining Set - Slate/Concrete HL-LIFT-SL-13EDS-DW-C

## Product Images

---





## Description

---

The Lift Extendable Dining Set Collection which boasts timeless modern lines and durable, low-maintenance materials with the Lift Stackable Dining Chair and Spread Extendable Dining Table. The table features a unique, scratch-proof, Al-Concrete look table top. The table's modern design makes it the perfect companion to the modern and sleek Lift Stackable Dining chair made from a fully welded frame and a sling seat bucket for cushion free use. We love the way this mixed material outdoor dining set looks and feels.

## Includes

- 12x Lift Dining Arm Chair - Slate HL-LIFT-SL-DAC-DW
- 1x Spread Extendable Dining Table - Slate/Concrete HL-SP-SL-EXTDT-CON

## Dimensions

- Lift Dining Arm Chair : 22.5L x 26.5W x 34.25H (6 lbs.)
  - Frame Height: 34.25
  - Seat Height (No Cushion): 17.75
  - Back Height: 16.5
  - Arm Height: 25.25
- Spread Extendable Dining Table : 82 - 126L x 39.25W x 30H (110 lbs.)
  - Frame Height: 30
  - Under Table Height: 26.5

## Features

- Durable, rust proof frames made from thick gauge aluminum with a high-quality powder coated finish that is appropriate for residential and commercial settings.
- Comfortable, quick-drying sling fabric.
- Scratch resistant proprietary Al-Stone top with a concrete look.
- Easy and durable extension mechanism, simply pull apart the table from both sides and flip the extension leaf into place where it will stay put with magnetic hardware.
- Stackable design makes storage and transportation easy.
- Plastic foot glides help to protect your patio from scratching and also to help keep the furniture protected from dirt or water that can accumulate on the patio.
- Recommended for use only under covered patios, or if placed in direct sun, must be covered with protective cover to prevent fading