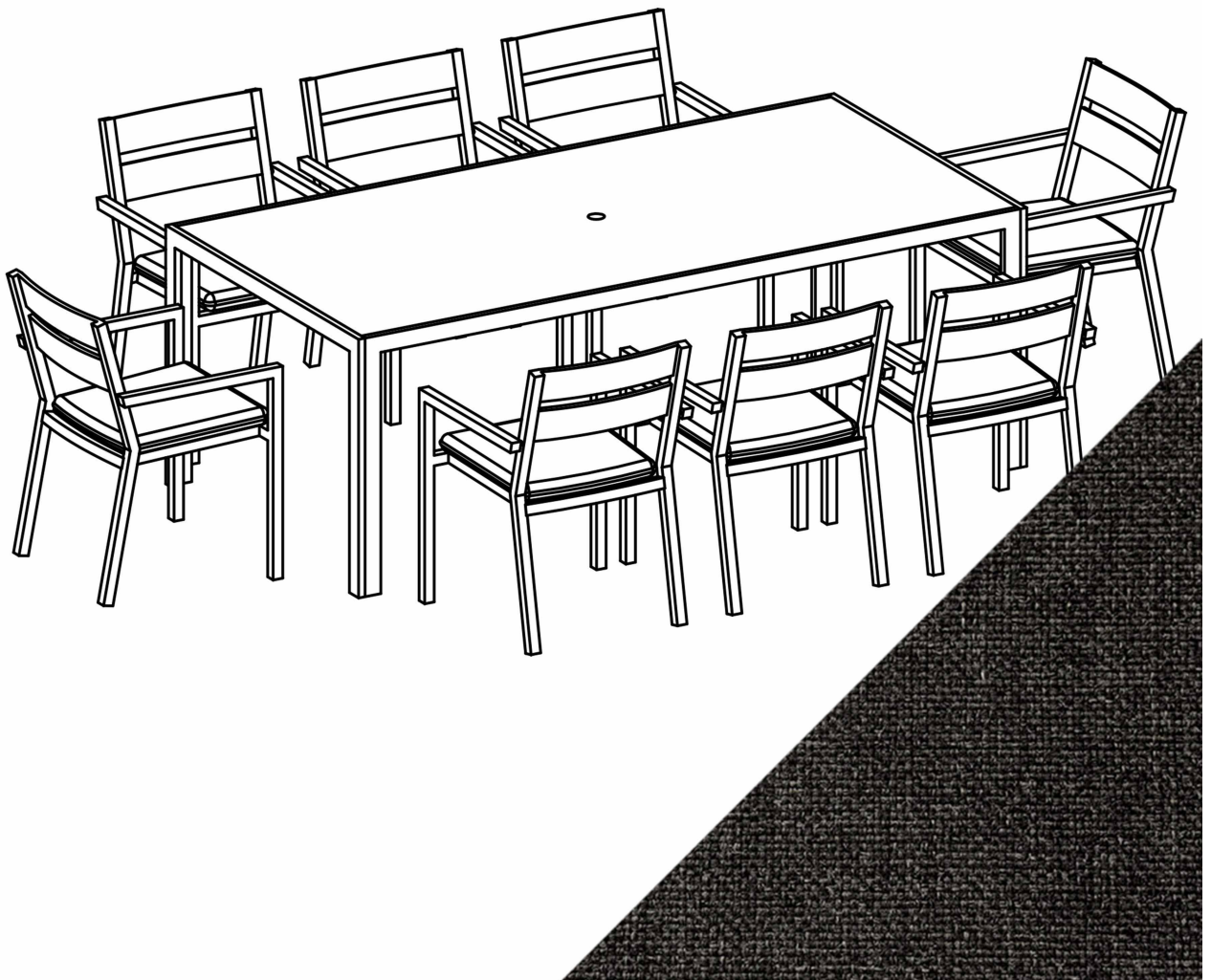


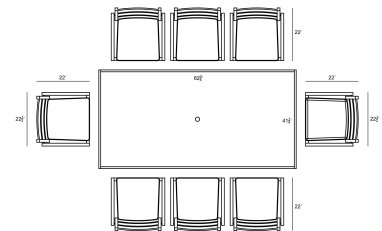
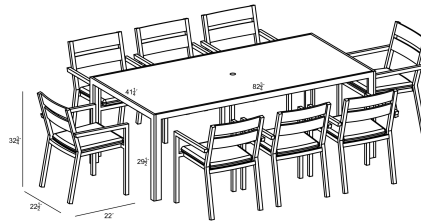
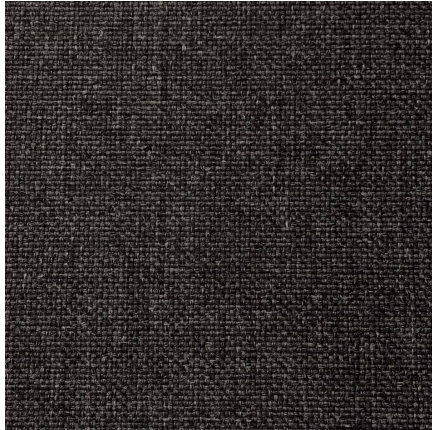


HARMONIA
LIVING

Pacifica 9 Piece Dining Set - Slate - Rumba Carbon HL-PAC-SL-9DS-CB

Product Images





Description

The Pacifica 9 Piece Dining Set by Harmonia Living will bring refinement and relaxation to your favorite outdoor space. Enjoy the simple elegance of its plush Sunbrella cushions, gentle angles and minimalist design, perfect for patios both large and small. Its sturdy aluminum frames and fade resistant cushions are made to endure in any outdoor setting, rain or shine. Surround this set with light, natural decor for a zen vibe, or pair it with dark, bold decor to make more of a statement.

Includes

- 8x Pacifica Dining Arm Chair - Slate HL-PAC-SL-DAC
- 1x Staple 8-Seater Rectangular Dining Table - Slate HL-STA-SL-8RCDT-AC

Dimensions

- Pacifica Dining Arm Chair : 22.5L x 22W x 32.75H (16 lbs.)
 - Frame Height: 32.75
 - Seat Height (No Cushion): 17
 - Seat Height (With Cushion): 19
 - Back Height: 13.75
 - Arm Height: 24.5
- Staple 8-Seater Rectangular Dining Table : 82.75L x 41.25W x 29.5H (78 lbs.)
 - Frame Height: 29.5
 - Under Table Height: 27.5

Features

- Durable, rust proof frames made from thick gauge aluminum with a high-quality powder coated finish that is appropriate for residential and commercial settings.
- Extra strong tempered glass top with scratch-proof ceramic coating will hide fingerprints and dust.
- Stackable design makes storage and transportation easy.
- Pre-cut umbrella hole fits umbrellas with a pole diameter up to 1.5" and includes a matching umbrella hole cover.
- Plastic foot glides help to protect your patio from scratching and also to help keep the furniture protected from dirt or water that can accumulate on the patio.
- Cushions are made in America using American materials including Sunbrella, Outdura and Revolution performance fabrics which are easy to clean, are fade, stain, mildew resistant and carry a 5 year warranty.
- Machine washable cushion covers feature durable and frustration free YKK brand zippers for easy removal. Top and bottoms of our seat cushions are identical so they can be flipped if a stain gets on the cushion between machine washes.
- All cushions are sewn with PremoBond brand marine-grade UV treated thread made from high-quality mold, mildew, and rot resistant bonded polyester to ensure your cushions won't fall apart at the seams.
- Each seam is finished with overlock stitching for additional durability, reinforcement, weather proofing and to prevent the fraying of internal fabric edges during machine washing.
- American made CertiPUR-US® certified foam cushion inserts which are produced without harmful chemicals such as formaldehyde, ozone depleters, PBDEs, TDCPP or TCEP flame retardants and are free of mercury, lead, and other heavy metals to protect the planet as well as the health of you and your loved ones.
- Thick 2" foam cushion inserts creates a cushion that's firm enough to avoid bottoming out, but soft enough for comfort.
- Cushion ties are sewn to the back of each seat cushion to secure them in place to the frame.