



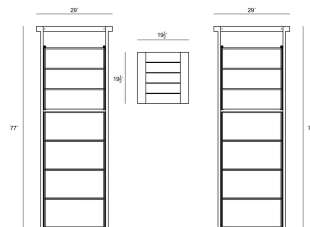
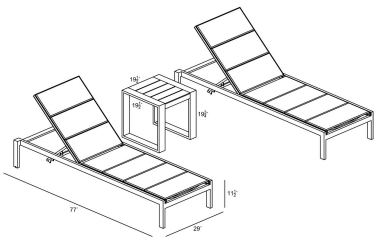
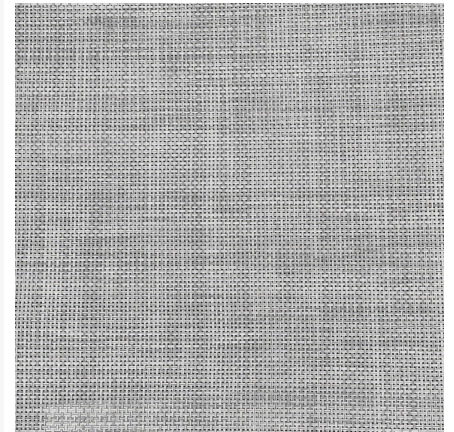
HARMONIA  
LIVING

Lift 3 Piece Chaise Lounge Set - White HL-LIFT-WT-3CLS-DW

Product Images

---





## Description

The Lift Chaise Lounge Set pairs well with Harmonia Living's Portal End Table, boasting timeless modern lines and durable, low-maintenance materials. Its beautiful sling material is quick-drying, perfect for any poolside setting while the durable aluminum end table provides the perfect complement that's both functional and modern in appeal.

## Includes

- 2x Lift Reclining Chaise Lounge - White/Driftwood HL-LIFT-WT-RCL-DW
- 1x Portal End Table - White HL-PORT-WHT-ET

## Dimensions

- Lift Reclining Chaise Lounge : 29L x 77W x 11.5H (50 lbs.)
  - Frame Height: 11.5
  - Seat Height (No Cushion): 11.5
- Portal End Table : 19.5L x 19.5W x 19.75H (14 lbs.)
  - Frame Height: 19.75

## Features

- Durable, rust proof frames made from thick gauge aluminum with a high-quality powder coated finish that is appropriate for residential and commercial settings.
- Comfortable, quick-drying sling fabric.
- Multiple reclining positions, including flat.
- Small back wheels make it easy to relocate this chaise lounge near the pool or into the sun.
- Stackable design makes storage and transportation easy.
- Plastic foot glides help to protect your patio from scratching and also to help keep the furniture protected from dirt or water that can accumulate on the patio.