

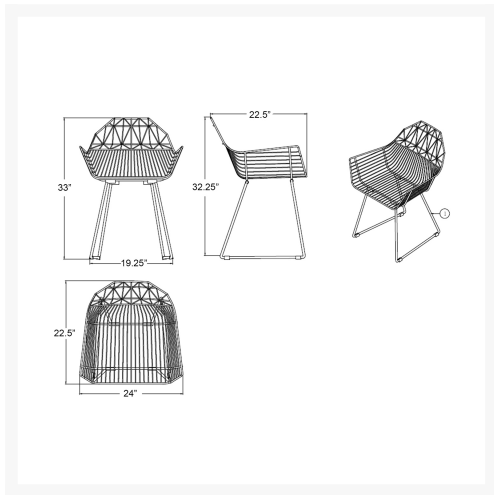
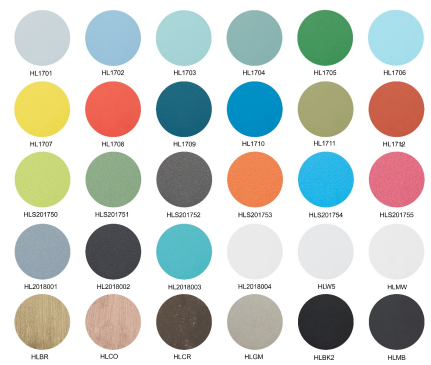


HARMONIA
LIVING

Ace Dining Arm Chair - CUSTOM HL-ACE-DAC-CUSTOM

Product Images





Description

The Ace Dining Collection by Harmonia Living offers midcentury style with durable, modern-day construction. Born from a sturdy, powder-coated steel frame, this chair is built to last in any climate. Its carefully crafted contouring allows you to enjoy stylish, comfortable seating without a cushion. With an airy style, sturdy build and stackable design, these commercial grade chairs are a brand favorite!

Includes

- 1x Ace Dining Arm Chair - Matte Black (HL-ACE-DAC-MB)

Dimensions

- Ace Dining Arm Chair: 24"L x 22.5"W x 33"H (16 lbs.)
- Frame Height: 33"
- Seat Height: 18.5"
- Back Height: 14.5"
- Arm Height: 25.5"

Features

- Electrophoretically Deposited Primer (EDP) undercoat and top layer powder coat add extra durability, style and corrosion resistance.
- Commercial grade construction intended for regular indoor or outdoor use.
- Chairs contoured for comfort without a cushion.

- Vibrant Non-Gloss Powder coat Finish.
- Stackable design makes storage and transportation easy.