

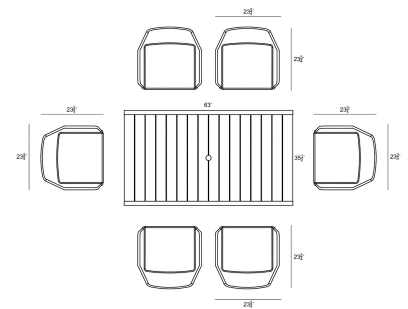
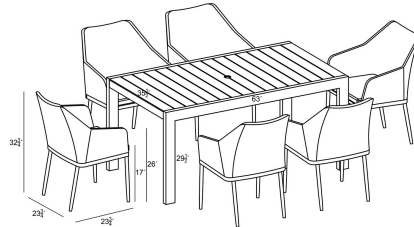
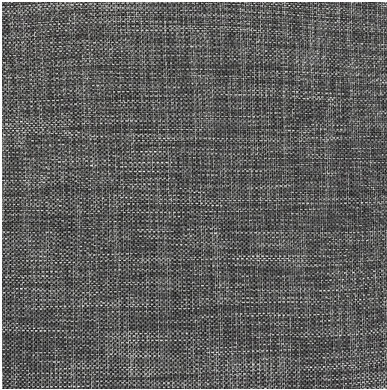
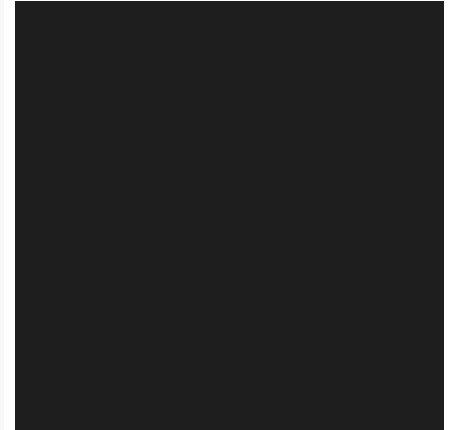


HARMONIA
LIVING

Tailor Classic 6 Seat Rectangular Dining Table - Black TA-BK-SET530

Product Images





Description

Sophistication and versatility converge with the Tailor Classic 6 Seat Rectangular Dining Table Set by Harmonia Living. This table's durable, lightweight aluminum frame is designed to withstand the elements, making it ideal for frequent use, cleaning, and even rainfall. Tailor dining chairs bring the intimate style of the indoors outside with fine materials, including weather-resistant Texteline mixed with olefin fibers and powder-coated aluminum frames. Add a touch of class to your outdoor patio space with this timeless Harmonia Living dining set.

Includes

- 6x Tailor Dining Chair - Black TA-BK-DAC-CO
- 1x Classic Aluminum 6-Seater Rectangular Dining Table - Slate CSAL-SL-6RCDT

Dimensions

- Tailor Dining Chair : 23.75L x 23.75W x 32.75H (9 lbs.)
 - Frame Height: 32.75
 - Seat Height (No Cushion): 17
 - Seat Height (With Cushion): 19.25
 - Back Height: 13.5
 - Arm Height: 26
- Classic Aluminum 6-Seater Rectangular Dining Table : 63L x 35.5W x 29.5H (70 lbs.)
 - Frame Height: 29.5

Features

- Durable, rust proof frames made from thick gauge aluminum with a high-quality powder coated finish that is appropriate for residential and commercial settings.
- Padded Olefin rope seat bucket contoured for comfort.
- Upholstered "indoor look" dining chair for outdoor use.
- Stackable design makes storage and transportation easy.
- Pre-cut umbrella hole fits umbrellas with a pole diameter up to 1.5" and includes a matching umbrella hole cover.
- Plastic foot glides help to protect your patio from scratching and also to help keep the furniture protected from dirt or water that can accumulate on the patio.
- Includes dining seat pad for additional comfort.